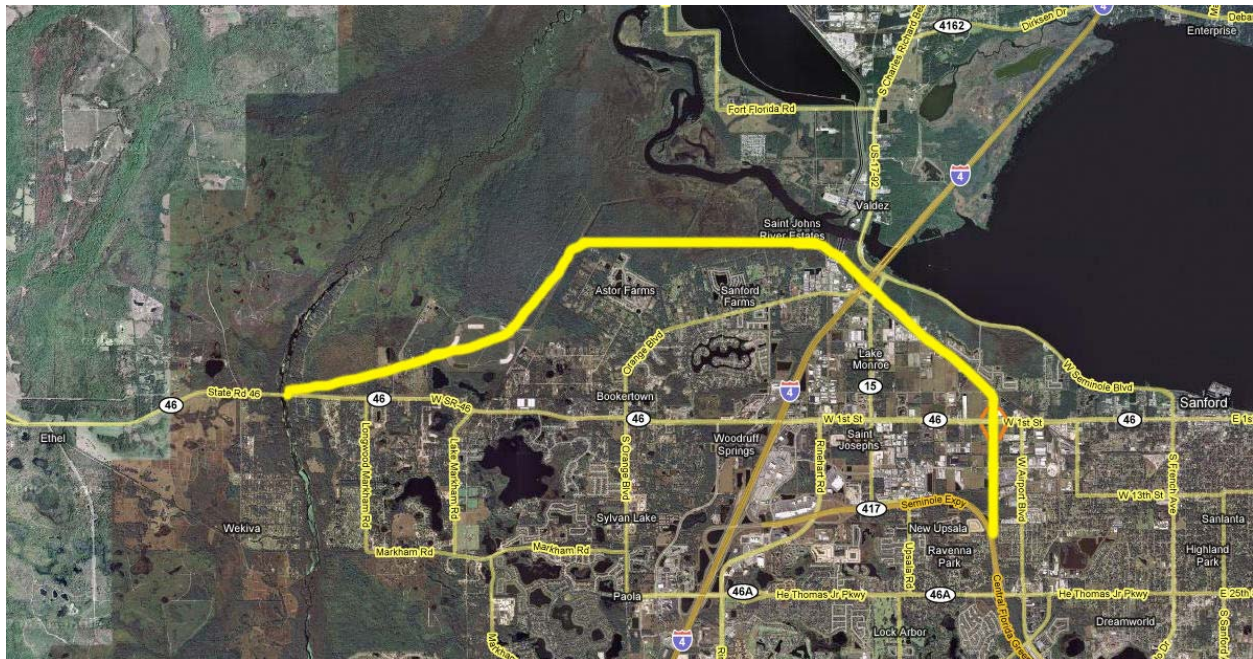




## Report On the WPCC Meeting With the Florida Department of Transportation (FDOT) DeLand, 15 July 2008

Members of the WPCC Executive Committee (EC) met with key staff from FDOT Region 5 (responsible for Seminole and eight other counties) and CH2M Hill consultants for the PD&E Study in DeLand on July 15 to discuss the eight WPCC Seminole County route alternatives presented at the Seminole County Expressway Authority May 6 meeting. A representative from the Federal Highway Administration was also in attendance. Each alternative was reviewed for its viability, and whether it met Wekiva Parkway objectives mandated by law. In summary, the WPCC Alternative, noted on our Petition as Map G – “Seminole County/Bevier Rd Alternative”, was selected to have potential and will be further investigated for its viability. The FDOT is expected to report its findings to the WPCC by early September 2008. All members of the WPCC EC strongly support the selection of this alternative, Map G – “Seminole County/Bevier Rd Alternative”, instead of the current Recommended Preferred Alternative, since it avoids our neighborhoods, maximizes use of undeveloped land, and maintains the intended ‘parkway’ look.



Map G – “Seminole County/Bevier Rd Alternative”