

To: Seminole County Expressway Authority (SCEA) members, and Seminole County Commissioners

We, the undersigned concerned citizens of Seminole County, call on the Seminole County Expressway Authority members and Seminole County Commissioners to reject the CH2M Hill “Recommended Preferred Alternative” Wekiva Parkway alignment in Seminole County (Figure 1), which proposes a route through or in very close proximity to established neighborhoods, ball fields, churches, schools and businesses.

We call on the SCEA members and Seminole County Commissioners to adopt our collective vision of maintaining and enhancing the quality of life for residents of the Wekiva Basin area, retaining the “natural choice” environment of our neighborhoods. This is in alignment with Seminole County's unique character, and its claim as “Florida’s Natural Choice”.

We further call on the SCEA members and Seminole County Commissioners to consider alternative alignments recommended by the Wekiva Parkway Community Coalition (WPCC), as enumerated in “[WPCC Alternative WP Alignments, r1](#)”, which would individually or collectively:

- Reduce impact on surrounding neighborhoods and businesses
- Reduce cost
- Enhance business access
- Reduce impervious cover
- Reduce time and impact of construction
- Reduce noise and visual impact to surrounding neighborhoods
- Enhance connectivity
- Enhance landscape
- Enhance safety
- Accomplish above goals while also reducing traffic congestion and expanding highway capacity

Click [HERE](#) to sign the petition.

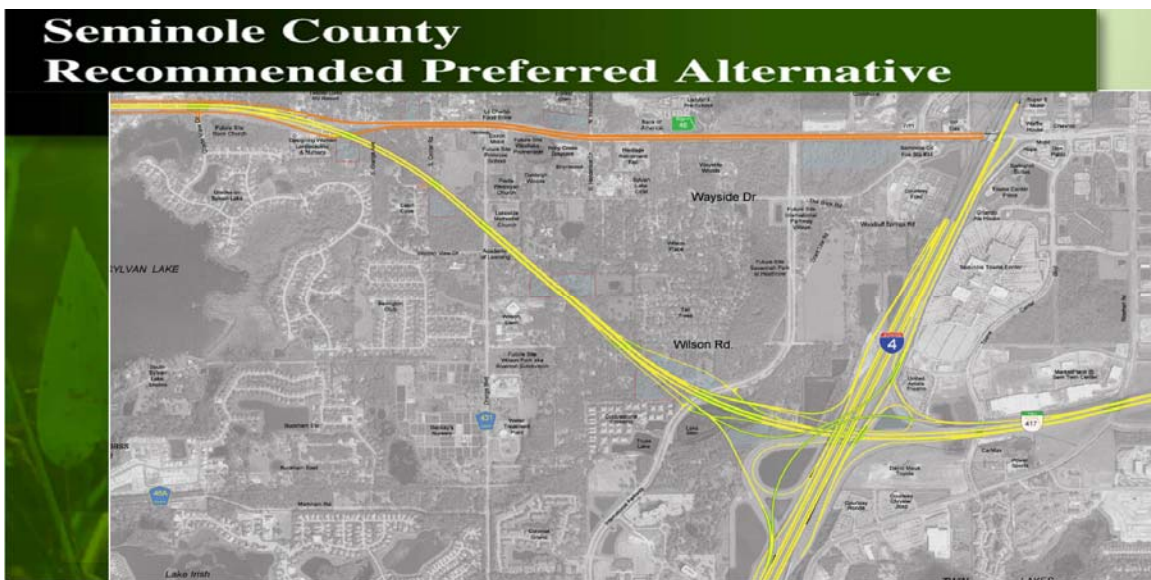


Figure 1